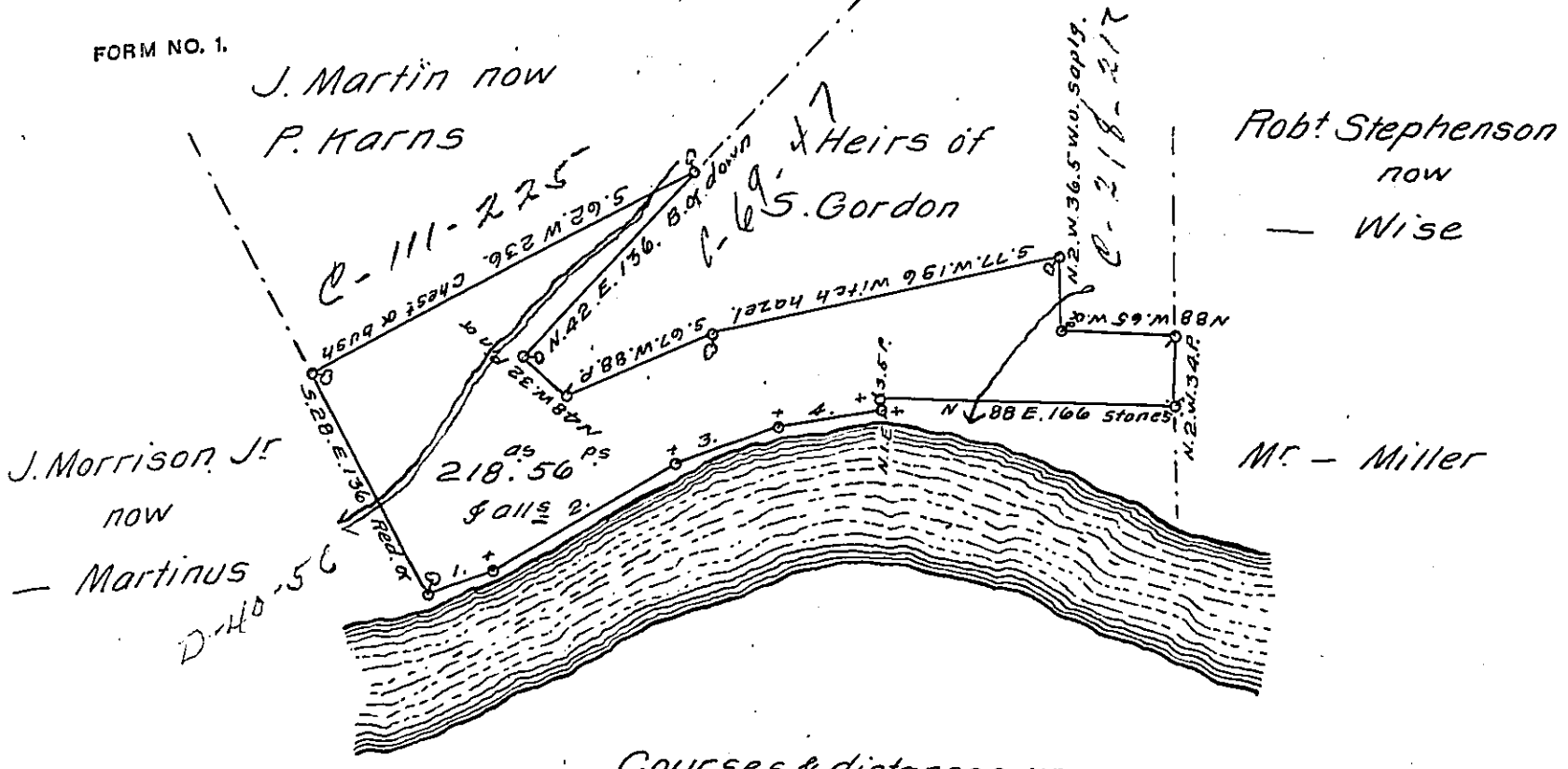


FORM NO. 1.



Courses & distances up  
the River from Red oak  
Viz. N<sup>o</sup> 1. N. 70 1/2 E. 35.  
N<sup>o</sup> 2. N. 79 1/4 E. 119.  
" 3. N. 70. E. 61.  
" 4. N. 79 3/4 E. 58. P.

Draft of a tract of land situate in Sandy Creek Creek Township West of  
and adjoining the Allegheny River. and about a quarter of a mile above  
the mouth of Big Sandy Creek.

Survey'd 21<sup>st</sup> February A. D. 1860 on improvement and Settlement of  
J. J. Jennings.

W<sup>m</sup> Hilands

C. S.

To Hon.

Jas. P. Barr. }  
Surveyor Gen.' }

IN TESTIMONY that the above is a copy of the original remaining on file in  
the Department of Internal Affairs of Pennsylvania, made  
conformably to an Act of Assembly approved the 16th day of  
February, 1833, I have hereunto set my Hand and caused  
the Seal of said Department to be affixed at Harrisburg,  
this first day of March 1912.

*Henry Howell*  
Secretary of Internal Affairs.